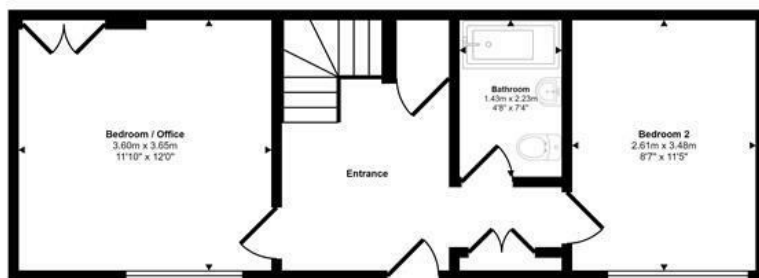




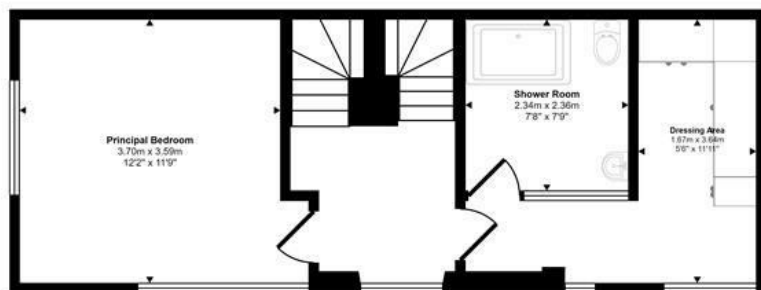
Elm Hill | Norwich | NR3  
 Guide £650,000

abbotFox

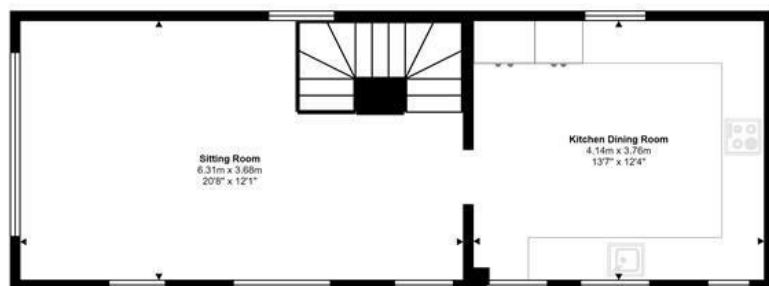
Approx Gross Internal Area  
 115 sq m / 1234 sq ft



Ground Floor  
 Approx 37 sq m / 402 sq ft



First Floor  
 Approx 38 sq m / 408 sq ft



Second Floor  
 Approx 39 sq m / 424 sq ft

This floorplan is only for illustrative purposes and is not to scale. Measurements of rooms, doors, windows, and any items are approximate and no responsibility is taken for any error, omission or mis-statement. Icons of items such as bathroom suites are representations only and may not look like the real items. Made with Made Snappy 360.

Energy Efficiency Rating		
	Current	Potential
Very energy efficient - lower running costs		
(92 plus) <b>A</b>		
(81-91) <b>B</b>		
(69-80) <b>C</b>		
(55-68) <b>D</b>		
(39-54) <b>E</b>		
(21-38) <b>F</b>		
(1-20) <b>G</b>		
Not energy efficient - higher running costs		
<b>England &amp; Wales</b>	EU Directive 2002/91/EC	

Disclaimer – In accordance with the Property Misdescriptions Act, the company gives notice that all descriptions, references to condition, necessary permissions for use and other details are given in good faith and believed to be correct, but any intending lessees do not rely on them as statements of fact, but must satisfy themselves by inspection or other means, as to their accuracy.



abbotFox Bespoke presents The Old Weaver's House on Norwich's most famous and picturesque street, Elm Hill.

Generously proportioned rooms are neatly arranged over three floors and overlook The River Wensum and Elm Hill Loke gardens.

There are three double bedrooms, a most impressive triple aspect, vaulted sitting room with breath taking views and a stunning kitchen dining room.

Elm Hill is the most complete Medieval street in Norwich dating back to 1507. It is lined with beautiful homes and shops and is on the door step of some of Norwich's most popular, independent eateries and public houses including the famous 'Ribs of Beef'.

